

This article is reprinted with permission of the Ohio Genealogical Society (OGS) and first appeared in *Ohio Genealogical Society Quarterly*, Vol. 52, Summer 2012: 93-97. For more on OGS, please visit <http://ogs.org>.

## Philatelic Genealogy: Ohio at Work

James R. Miller

An old envelope can let us glimpse our ancestor at work. This article presents eight envelopes showing an Ohio workplace, or an animal or object offered for sale in Ohio between 1866 to 1908. Each envelope's source is identified and guidance provided on searching for similar envelopes. All senders and recipients are identified in a U.S. census, city directory, or other standard reference, where possible. As with any source of genealogical information, old envelopes must be studied in combination with other sources before reaching any conclusion.

“J.M. Shaw” of Marits, Ohio wrote to “Dwight Lincoln” of Milford Center, Ohio in 1906.[Figure 1] The envelope shows “Dandy Jim,” a Duroc-

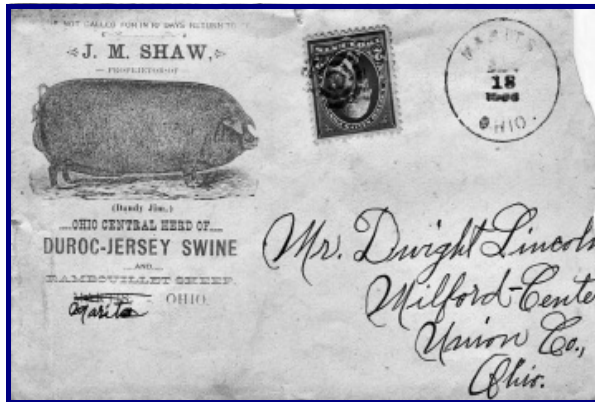


Figure 1: J. M. Shaw to Dwight Lincoln

Jersey hog, and that “Rambouillet Sheep” are for sale. A Jonathan M. Shaw, a farmer, is in Canaan Township (where Marits is located) in the 1900 U.S. census.[1] J.M. Shaw of Marits, Ohio is cited in an American Duroc-Jersey record book.[2] Dwight Lincoln, a farmer, is in Allen (four miles northwest of Milford Center) in the 1900 U.S. census, and states he is a sheep-breeder in a 1901 U.S. passport application.[3] This envelope appears to have been sent from a livestock breeder to a farmer. The author purchased this envelope on eBay® for \$9.[4]

The “M.B. Gilbert & Co.” of Portsmouth, Ohio wrote to the “W.C. McKee & Co.” of Hanging Rock, Ohio in 1906.[Figure 2] The envelope shows



Figure 2: M. B. Gilbert & Co. To W. C. McKee & Co.

a bar of Star Soap. An M.B. Gilbert, a grocer, and his wife Caroline are in Portsmouth in the 1880 U.S. census, and M.B. is shown in the 1870 U.S. census as a wholesale grocer.[5] Caroline Gilbert, a widow, and Richard Kendall, her apparent grandson, are in Portsmouth in the 1900 U.S. census.[6] The Gilbert Grocery Company is listed in the 1937 Portsmouth directory with Richard S. Kendall as secretary.[7] A William C. McKee, a dry goods and grocery seller, is in Hanging Rock in the 1900 U.S. census.[8] This envelope appears to have been sent from a wholesale to a retail grocer. The author purchased this envelope from a postal history vendor for \$19.[9]

“George Feldkamp,” a chair maker in Cincinnati, wrote to “James A. Russell” of Braddock, Pennsylvania in 1890.[Figure 3] The envelope has an illustration of a wooden chair. George Feldkamp, a chair manufacturer, is listed in

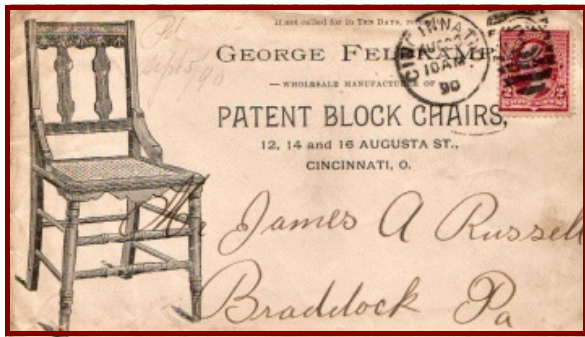


Figure 3: George Feldkamp to James A. Russell

the 1890 Cincinnati directory at the street address printed on the envelope, and this may be the George Feldkamp in Cincinnati in the 1900 U.S. census.[10] A James A. Russell is in Braddock in the 1900 U.S. census.[11] This envelope and Figure 6 are from a postal history vendor website where *Philgen.org* has permission to use photographs.[12]

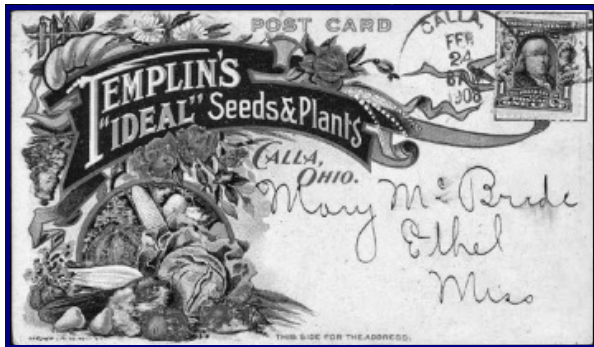


Figure 4: Templin's Ideal Seeds & Plants to Mary McBride

“Templin's 'Ideal' Seeds & Plants” of Calla, Ohio wrote to “Mary McBride” of Ethel, Mississippi in 1908.[Figure 4] A Mark B. Templin, a mail-order seedsman, is in Green Township (where Calla is located), and a Mary D. McBryde is in Kosciusko, Mississippi (six miles southwest of Ethel) in the 1910 U.S. census.[13] This envelope and Figures 7 and 8 are from a collection of online philatelic auction catalogs from which *Philgen.org* has permission to use photographs.[14]



Figure 5: Owens, Lane, Dyer & Co. To W. W. Milner

The “Owens, Lane, Dyer & Co.” of Hamilton, Ohio wrote to “W.W. Milner” of East Monroe, Ohio circa 1870.[Figure 5] The envelope shows various machines, and a foundry, thrasher factory, and machine works. Job E. Owens, a machine factory proprietor; Clark Lane, a steam thrasher plant proprietor; and Albion G. Dyer, a steam thrasher manufacturer, are in Hamilton in the 1870 U.S. census.[15] A William Milner, a farmer, is in Samantha (six miles southwest of East Monroe) in the 1870 U.S. census.[16] The envelope may have involved an order for a farm machine. This envelope is from another collection of online philatelic auction catalogs from which *Philgen.org* has permission to use photographs.[17]



Figure 6: A. Arter to Joseph Erhart

“A. Arter” of Lisbon, Ohio wrote to “Joseph Erhart” of Erie, Pennsylvania in 1899.[Figure 6] The envelope shows the building of “A. Arter, Manufacturer of Big Saddles, Etc.” An Alpheus Arter, a saddle pad manufacturer, is in Lisbon in the 1900 U.S. census.[18] Joseph Erhart, selling “saddlery, hardware, trunks, etc.,” is listed in the 1899 Erie city directory, and shown as a “Trunk Store” worker in the 1900 U.S. census.[19] This envelope appears to have been sent from a saddle maker to a retailer.

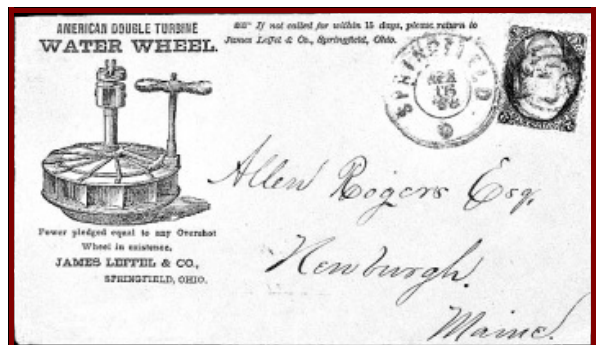


Figure 7: James Leffel & Co. To Allen Rogers

“James Leffel & Co.” of Springfield, Ohio wrote to “Allen Rogers” of Newburgh, Maine in

1866.[Figure 7] The envelope has an illustration of a turbine water wheel. A James Leffel, “foundryman,” is in Springfield in the 1860 U.S. census, and “The James Leffel and Company,” maker of turbine water wheels, is in the 1890 Springfield directory.[20] An Allen Rodgers, laborer, is in West Hampden, Maine (four miles east of Newburgh) in the 1860 U.S. census, but it is uncertain if he is the addressee.[21]

“The Church and McConnell Co.” of Toledo, Ohio wrote to “H.F. Bischoff” of Burgoon, Ohio in 1908.[Figure 8] The envelope shows a turkey with a Charles Denby banner walking on a path of cigars. Charles Denby is brand of cigars still being made.[22] John T. McConnell and William G. Church, president and vice president of Church & McConnell, Wholesale Grocers, are listed in the 1899 Toledo directory, and William G. Church, president of a wholesale grocery, is in Toledo in the 1910 U.S. census.[23] Henry F. Bischoff, a grocery store merchant, is in Jackson Township (where Burgoon is located) in the 1910 U.S. census.[24] This envelope was sent from a wholesale to a retail grocer.

This article shows that old envelopes can illustrate our ancestor's life at work. The



Figure 8: Church & McConnell Co. To H. F. Bischoff

illustrations on these envelopes add detail and color to occupations shown in the census as farmer, grocer, and manufacturer. Postal historians refer to these envelopes as advertising covers, and published references show hundreds of examples.[25] Other genealogical information is available from postal history, including an immigrant's home village, military service details, social and political interests, and family photographs from real photo postcards.[26] Please contact the author if you have an envelope or postcard that you would like to add to *Philgen.org*, the philatelic genealogy website and database.

## Notes

1. 1900 U.S. census, Morrow County, Ohio, population schedule, Canaan Township, enumeration district (ED) 95, sheet 10A (penned), dwelling 224, family 225, Jonathan M. Shaw; digital image, *Ancestry.com* (<http://www.ancestry.com>: accessed 7 April 2011); citing National Archives and Records Administration (NARA) microfilm publication T623, roll 1,309.
2. American Duroc-Jersey Record Association, *American Duroc-Jersey Record*, Volume 10, 1900; digital image, Google Books (<http://books.google.com/books>: accessed 8 April; search for shaw+marits), 46, 86, 110.
3. 1900 U.S. census, Union County, Ohio, population schedule, Allen, ED 129, sheet 6A (penned), dwelling 112, family 116, Dwight Lincoln; digital image, *Ancestry.com*; citing NARA microfilm T623, roll 1,328; U.S. passport application of Dwight Lincoln, number 40,427, Union County, Ohio, issued 4 May 1901; digital image, *Ancestry.com*; citing *Registers and Indexes for Passport Applications, 1810–1906*, NARA microfilm M1372, roll 575.
4. Ebay®, (<http://www.ebay.com>: accessed 10 April 2011); select “Stamps,” “United States,” “Covers,” “Postal History,” and enter advertising in the search box to see examples.
5. 1880 U.S. census, Scioto County, Ohio, population schedule, Portsmouth, ward 1, ED 1, page 10B (penned), dwelling 62, family 71, M.B. Gilbert; digital image, *Ancestry.com*; citing NARA microfilm T9, roll 1,064; 1870 U.S. census, Scioto County, Ohio, population schedule, Portsmouth, ward 1, page 15 (penned), dwelling 69, family 90, M.B. Gilbert; digital image, *Ancestry.com*; citing NARA microfilm M593, roll 1,265.
6. 1900 U.S. census, Scioto County, Ohio, population schedule, Wayne Township, Portsmouth, ward 5, ED 126, sheets 13A-13B (penned), dwelling 235, family 271, Caroline Gilbert and Charles F. Kendall; digital images, *Ancestry.com*; citing NARA microfilm T623, roll 1,319.
7. R.L. Polk & Co., publishers, *Polk's Portsmouth (Scioto County, Ohio) City Directory*, 1937; digital image, *Ancestry.com*, 204, “Gilbert Grocery Co.”
8. 1900 U.S. census, Lawrence County, Ohio, population schedule, Hamilton Township, Hanging Rock Village, ED 69, sheet 5B (penned), dwelling 104, family 106, William C. McKee; digital image, *Ancestry.com*; citing NARA microfilm T623, roll 1,292.
9. American Philatelic Society, “Stamp Store” (<http://www.stampstore.org>: accessed 6 April 2011); “Search Stamps,” “By Country and Keyword,” select “United States” as “Country,” enter advertising as “Keyword” to see examples.

10. Williams & Co., proprietors, *Williams' Cincinnati Directory*, 1890; digital image, *Ancestry.com*, 381, "Feldkamp Geo."; 1900 U.S. census, Hamilton County, Ohio, population schedule, Cincinnati, ward 28, ED 239, sheet 9B (penned), dwelling 111, family 215, George Feldkamp; digital image, *Ancestry.com*; citing NARA microfilm T623, roll 1,280.
11. 1900 U.S. census, Allegheny County, Pennsylvania, population schedule, Braddock Borough, ward 3, ED 350, sheet 2B (penned), dwelling 34, family 36, James A. Russell; digital image, *Ancestry.com*; citing NARA microfilm T623, roll 1,366.
12. Jim Forte Postal History (<http://www.postalhistory.com/>: accessed 9 April 2011); select "United States," select "Advertising" to see examples.
13. 1910 U.S. census, Mahoning County, Ohio, population schedule, Green Township, ED 83, sheet 10A (penned), dwelling 186, family 188, Mark B. Templin; digital image, *Ancestry.com*; citing NARA microfilm T624, roll 1,211; 1910 U.S. census, Attala County, Mississippi, population schedule, Beat 1, Kosciusko, ED 3, sheet 1B (penned), dwelling 11, family 11, Mary D. McBryde; digital image, *Ancestry.com*; citing NARA microfilm T624, roll 732.
14. Schuyler Rumsey Philatelic Auctions, (<http://www.rumseyauctions.com/>: accessed 9 April 2011); select "Search," enter advertising as "Keyword" to see examples.
15. 1870 U.S. census, Butler County, Ohio, population schedule, Hamilton, ward 1, page 35 (penned), dwelling 274, family 293, Albion G. Dyer; Hamilton, ward 3, page 8 (penned), dwelling 48, family 60, Jobe [Job] E. Owens; Hamilton, ward 3, page 31 (penned), dwelling 210, family 231, Clark Lane; digital images, *Ancestry.com*; citing NARA microfilm M593, roll 1,176.
16. 1870 U.S. census, Highland County, Ohio, population schedule, Fairfield Township, Samantha Post Office, page 61 (penned), dwelling 458, family 457, William Milner; digital image, *Ancestry.com*; citing NARA microfilm M593, roll 1,222.
17. Robert A. Siegel Auction Galleries Inc., (<http://www.siegelauctions.com/>: accessed 9 April 2011); select "Power Search," enter advertising as "Key Word" to see examples.
18. 1900 U.S. census, Columbiana County, Ohio, population schedule, Centre [Center] Township, Village of Lisbon, ED 3, sheet 3A (penned), dwelling 52, family 54, Alpheus Arter; digital image, *Ancestry.com*; citing NARA microfilm T623, roll 1,248.
19. Wm. P. Atkinson, compiler, *Erie City Duplex Directory, 1899, 1900*; digital image, *Ancestry.com*, 294, "Erhart Joseph"; 1900 U.S. census, Erie County, Pennsylvania, population schedule, Millcreek Township, Erie City, ward 2, ED 75, sheet 4B (penned), dwelling 94, family 105, Joseph Erhart; digital image, *Ancestry.com*; citing NARA microfilm T623, roll 1,407.
20. 1860 U.S. census, Clark County, Ohio, population schedule, Springfield, ward 1, page 120 (penned), dwelling 888 [878], family 960, James Leffel [Leffel]; digital images, *Ancestry.com*; citing NARA microfilm M653, roll 943; Williams & Co., compiler, *Williams' Springfield City Directory, 1890*; digital image, *Ancestry.com*, 227, "Leffel The James & Co."
21. 1860 U.S. census, Penobscot County, Maine, population schedule, Hampden, West Hampden Post Office, page 48 (penned), dwelling 404, family 395, Allen Rogers; digital images, *Ancestry.com*; citing NARA microfilm M653, roll 447.
22. National Cigar Corporation, "Listing of National Cigar Brands," (<http://www.broadleafcigars.com/listing.htm> : accessed 9 April 2011).
23. The Toledo Directory Co., compiler, *R.L. Polk & Co.'s Toledo City Directory, 1899*; digital image, *Ancestry.com*, 348, "Church Wm. G." and 943, "McConnell John T."; 1910 U.S. census, Lucas County, Ohio, population schedule, Toledo, ward 7, ED 89, sheet 4B (penned), dwelling 81, family 99, William G. Church; digital image, *Ancestry.com*; citing NARA microfilm T624, roll 1,207.
24. 1910 U.S. census, Sandusky County, Ohio, population schedule, Jackson Township, ED 120, sheet 4A (penned), dwelling 90, family 91, Henry [Henry] F. Bischoff; digital image, *Ancestry.com*; citing NARA microfilm T624, roll 1,227.
25. *American Illustrated Cover Catalog, The Collection of John R. Biddle*, (North Miami, Florida: David G. Phillips Co., Inc., 1981).
26. Selected articles on philatelic genealogy are listed and viewable from the Main Menu of *Philgen.org* (<http://philgen.org>) beginning with *American Ancestors*.

## Acknowledgments

The author thanks Schuyler Rumsey Philatelic Auctions, Jim Forte Postal History and Robert A. Siegel Auction Galleries for permission to use photographs; genealogists who posted family trees online and responded to email and message board queries; and Lisa Birsinger for database and website support.

## **Previous Articles by James R. Miller**

*Ohio Genealogy News*, Vol. 41, No. 1, Spring 2010, pgs 6-9, *Philatelic Genealogy in Ohio - An Introduction*.  
*Ohio Genealogy News*, Vol. 41, No. 3, Fall 2010, pgs 11,12, *Philatelic Genealogy Follow-up: Real Photo Postcards*.

## ***About the Author***

James R. (Jim) Miller is a genealogist, postal historian and is the founder of *Philgen.org*. He lives in Caroga Lake, NY and Haguenau, France, and can be contacted at [jim@philgen.org](mailto:jim@philgen.org).